

Luis Muñoz Marín Intl. Airport (TJSJ / SJU) – Pilot Guide

STEREO ROUTES - In an effort to minimize frequency congestion when issuing IFR clearances to certain destinations within the San Juan CERAP (ZSU), the SJU airport has implemented the use of pre-defined stereo routes.

Route name	Destination	Filed route	Maintain	Expect higher in...
Shopper's Dash	TIST / STT	SJU RTE2 STT	5000	10 minutes
Beef Reef	TUPJ / EIS	SJU RTE2 MALIE JANER		
Cruzan Cruise	TISX / STX	SJU RTE2 COY		
Go West	TJMZ / MAZ	DDP G633 MAZ		

Phraseology – An abbreviated clearance will be issued only when the filed routing matches the ones prescribed on the table above.

Example:

Pilot: "San Juan Clearance, N123AB, requesting IFR clearance to St. Croix (TISX)"

ATC: "N123AB, cleared to St. Croix (TISX) via the Cruzan Cruise. Expect 9000' 10 minutes after departure. {Departure frequency}. {Assigned squawk}"

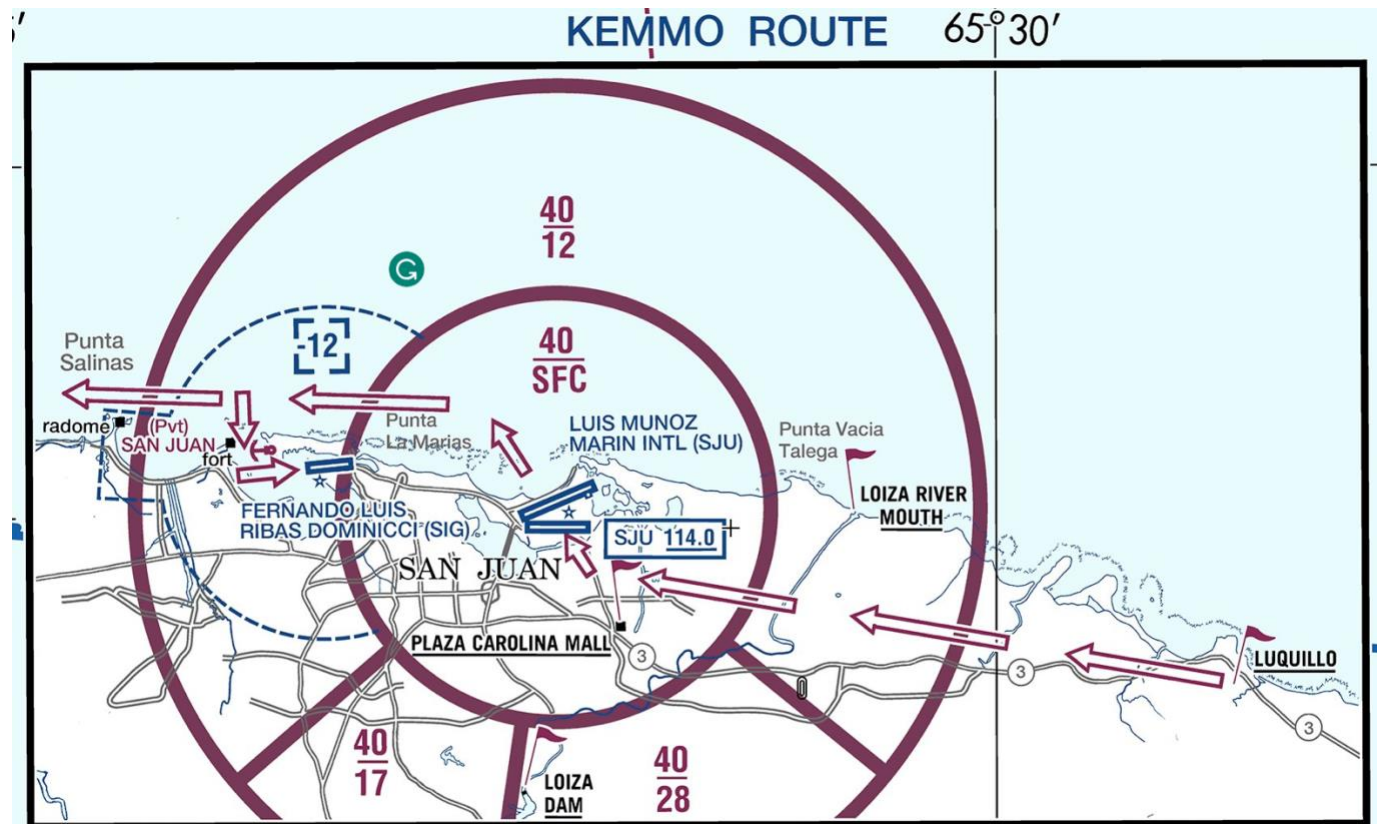
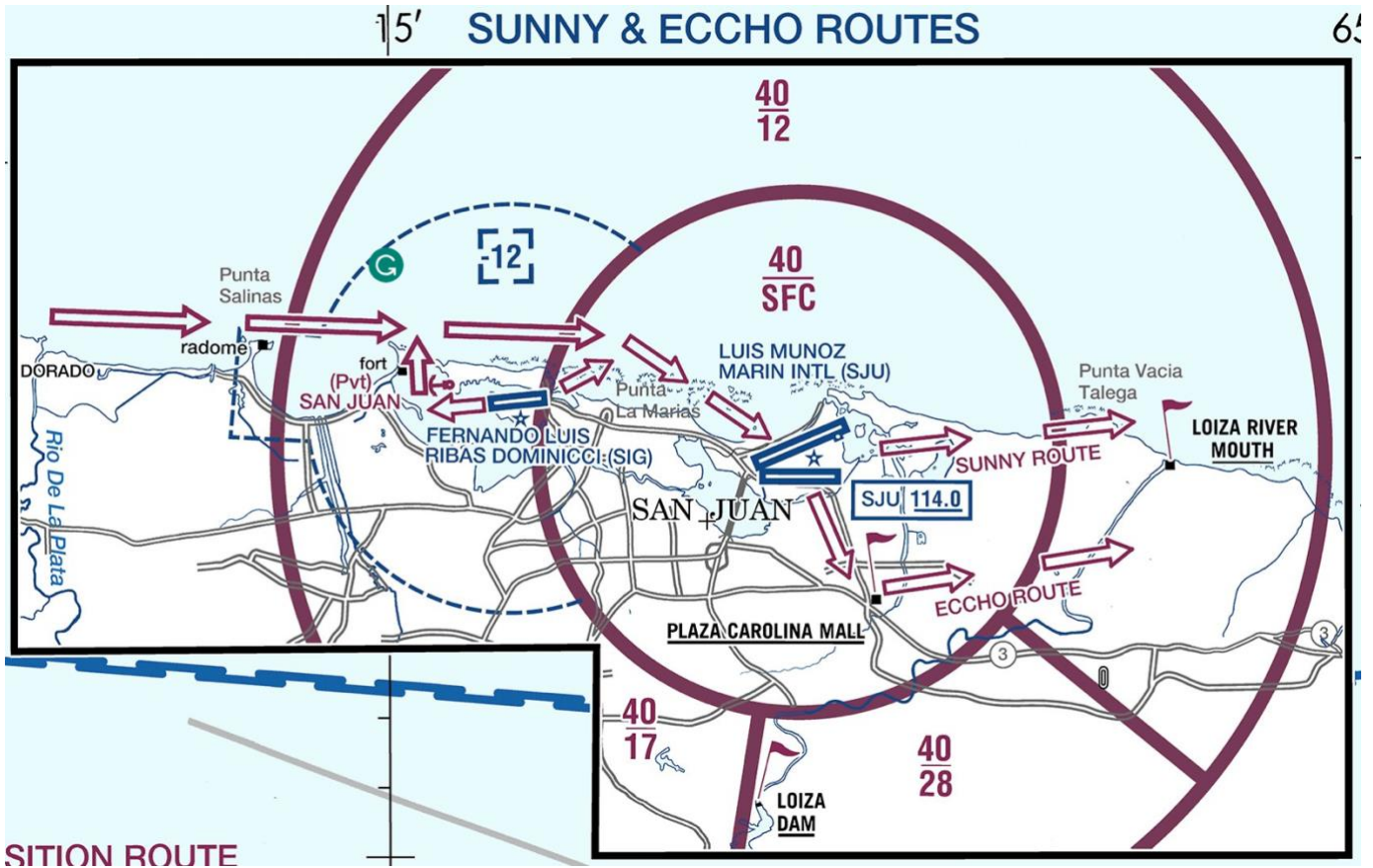
VFR Departures – Pilots requesting to depart the SJU airport VFR should request the Standard East or Standard West departure depending on the direction of intended flight. Note: All aircraft on a Standard East or Standard West Departure are expected to maintain VFR flight at or below 5000 until given further climb by the appropriate radar controller (SJU_APP, SJU_DEP, or SJU_CTR) or given a frequency change to UNICOM (122.800).

VFR aircraft departing SJU towards Isla Grande Airport (TJIG / SIG) shall request a VFR departure to Isla Grande.

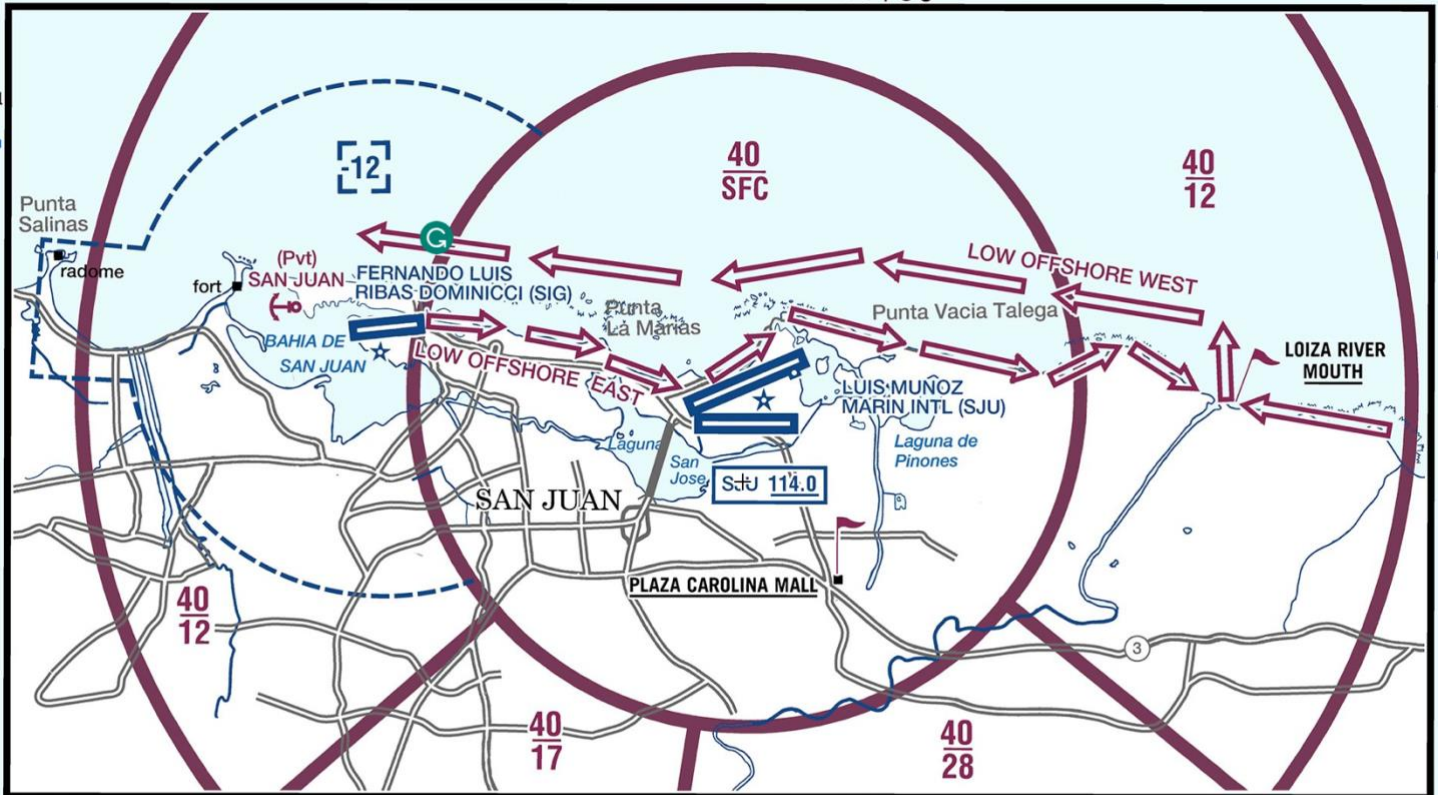
VFR Transitions – Aircraft that are transiting through the San Juan Class C Airspace are encouraged to take advantage of the published VFR transitions. Contact San Juan Approach (if online) or San Juan Tower to request the transition

Transition	Altitude (ASL)	Use when...
Sunny	2000	SJU East flow
Eccho	2000	SJU West flow
Kemmo	2500	SJU East/West flow
Low Offshore East	at or below 500	SJU East flow
Low Offshore West	at or below 500	SJU East flow

VFR Transition Diagrams (Puerto Rico – Virgin Islands VFR Terminal Area Chart)



LOW OFFSHORE ROUTES 66°30'



LOW OFFSHORE WEST: Contact San Juan approach 120.9 prior to the Loiza River Mouth, request the LOW OFFSHORE transition, and advise the intended destination. VFR aircraft flying westbound or landing SIG airport will cross the Loiza River mouth at or below 500' and fly 1 NM north of the shoreline (reference north of the reef). Maintain VFR.

LOW OFFSHORE EAST: Departing SIG RWY 9 or RWY 27, proceed eastbound at or below 500' over the shoreline up to Loiza River mouth. Expect further instructions from ATC. Maintain VFR.

Note: Procedures not available during SJU West operations.

Caution: Opposite direction traffic over the shoreline at or below 500' MSL.